

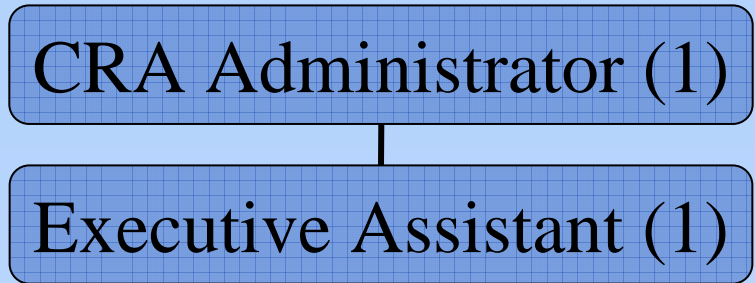


City Council Workshop  
Fiscal Year 2012  
Proposed Budget

August 17, 2011

Community Redevelopment Agency (CRA) - FY 2012 (Proposed)

# Organizational Chart



Community Redevelopment Agency (CRA) - FY 2012 (Proposed)

# Urban Core - NET\* Taxable Values

<b>Calendar Year</b>	<b>FY</b>	<b>Urban Core</b>	<b>Change</b>		<b>DIB</b>	<b>Change</b>
2006	2007	397,465,814	36.51%		117,967,080	41.28%
2007	2008	409,798,939	3.01%		112,866,370	-4.52%
2008	2009	406,205,013	-0.88%		110,232,693	-2.39%
2009	2010	378,044,569	-7.45%		98,567,747	-11.83%
2010	2011	356,016,325	-6.19%		88,658,444	-11.18%
Escambia County Property Tax Appraiser Estimates (July 2011):						
2011	2012	356,228,513	0.06%		88,586,933	-0.08%

*\*NET taxable value above base year - \$87,926,570 (CRA) \$49,010,270 (DIB)*

Community Redevelopment Agency (CRA) - FY 2012 (Proposed)

# Urban Core Redevelopment Trust Fund

<b>Revenue</b>	
Tax Increment (City/County/DIB)	\$3,980,800
Interest	5,000
<b>Total</b>	<b>3,985,800</b>
<b>Expenditures (Transfers out)</b>	
Urban Core CRA Fund	3,476,300
Debt Service Fund	429,500
Construction Fund (Maritime Park/ECUA)	80,000
<b>Total</b>	<b>\$3,985,800</b>

Community Redevelopment Agency (CRA) - FY 2012 (Proposed)

# Urban Core CRA Fund

<b>Revenue</b>	
Urban Core Trust Fund	\$3,476,300
Leased Property	
PSA Parking Lot	3,900
Cedar Street Parking Lot	20,800
16 Palafox Place	87,800
Plaza de Luna Concession	4,000
Pelican Drop TDC Grant	25,000
Miscellaneous / Interest	7,800
<b>Total</b>	<b>\$3,625,600</b>

Community Redevelopment Agency (CRA) - FY 2012 (Proposed)

# Urban Core CRA Fund

<b>Expenditures (Program Areas)</b>	
Administration and Planning	\$246,600
Asset Maintenance and Operation	387,500
Non-Capital Projects and Activities	544,100
NMTC - Project Support Payments	1,894,800
Grants & Aids (CMP Maintenance)	300,000
Allocated Overhead	252,600
<b>Total</b>	<b>\$3,625,600</b>

Community Redevelopment Agency (CRA) - FY 2012 (Proposed)

## Urban Core CRA Fund Program Areas

### ■ Programs and Activities

- Community Policing
- Project Development and Coordination Assistance
- Property/Business Owner and Resident Assistance
- Downtown Improvement Board (DIB Interlocal)

Community Redevelopment Agency (CRA) - Urban Core

## Future Liabilities

- ECUA
  - \$1,300,000 per year, FY 2013-2027
- Community Maritime Park Bond
  - \$2,600,000 per year, FY 2013-2016
  - \$3,000,000 per year, FY 2017-2040
- Community Maritime Park Maintenance
  - \$300,000 per year, FY 2012-2013
- Tech Park
  - TIF Rebate to City and County for land sales below appraised value - Up to \$10,325,000
- 16 Palafox Street
  - \$440,000 to City upon sale of building



**Questions???**