



*Play Pensacola*<sup>TM</sup>

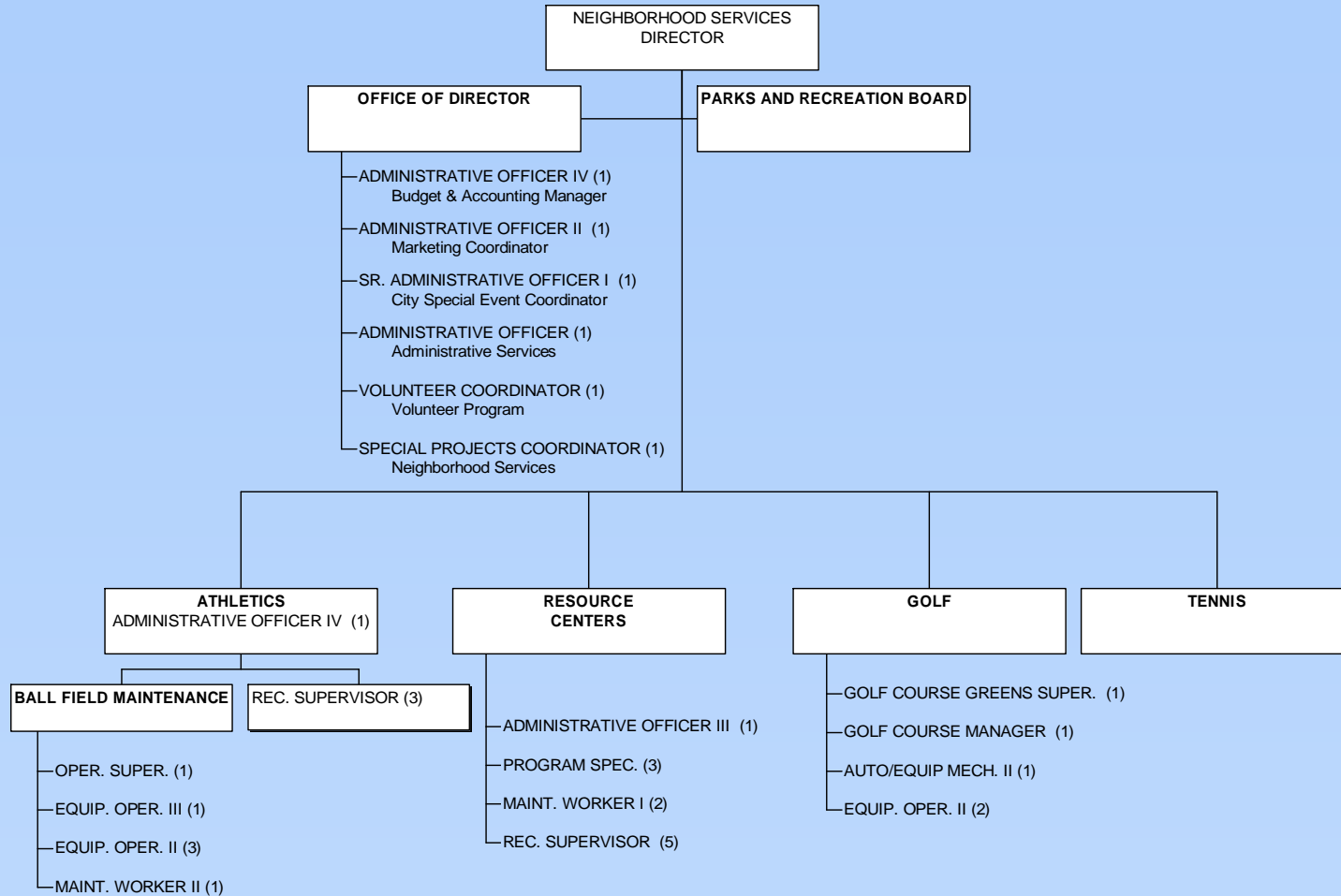
**NEIGHBORHOOD SERVICES**

**WWW.PLAYPENSACOLA.COM**

# Organizational Changes

- Department of Parks and Recreation becomes Department of Neighborhood Services
- Parks and Building Maintenance moves to Department of Public Works & Facilities
- Department of Library Services moves to Department of Neighborhood Services
- Community Centers become Community Resource Centers
- Establishment of One New Position – Coordinator, Community Volunteer Program

# FY 2012 Neighborhood Services



Total Positions: 33

# Recreation Fund FY 2012 Fees

There are no recommended FY 2012 fee increases for Recreation Fund.

# Tennis Center Fund FY 2012 Fees

10% increase recommended for tennis memberships to help offset utility and maintenance cost increases.

# Tennis Center Fund

## FY 2012 Fees

	<u>Approved</u> <u>FY 2011</u>	<u>Proposed</u> <u>FY 2012</u>	<u>Change</u>
<b>Annual (including tax)</b>			
<i><u>Individual</u></i>			
City Resident Hard Court	242.00	266.00	10%
Non-City Resident Hard Court	363.00	399.00	10%
All Court	576.00	634.00	10%
Sr. Citizen (65 & Older)			
City Resident Hard Court	181.50	200.00	10%
Non-City Resident Hard Court	272.25	299.00	10%
All Court	432.00	475.00	10%
<i><u>Family</u></i>			
Two Person Family			
City Resident Hard Court	302.50	333.00	10%
Non-City Resident Hard Court	453.75	499.00	10%
All Court	720.00	792.00	10%
Sr. Citizen Family (65 & Older)			
City Resident Hard Court	228.00	251.00	10%
Non-City Resident Hard Court	340.00	374.00	10%
All Court	540.00	594.00	10%
Unlimited - Spouse & Children under 18			
City Resident Hard Court	363.00	399.00	10%
Non-City Resident Hard Court	554.50	610.00	10%
All Court	792.00	871.00	10%

# Municipal Golf Course Fund FY 2012 Fees

No increases are recommended for existing fees.

Two new fees are recommended to help offset FY 2011 golf course capital improvement costs:

1. Capital Improvement Surcharge, Member \$1.00
2. Capital Improvement Surcharge, Non-member \$2.00

# Parks Volunteer Program

Officially started August, 2010.

- Community Volunteer Groups = 36
- Adopted Parks = 28
- Park Beautification Days = 42
- Special Events staffed by volunteers = 6
- Number of Volunteers = 1,387
- Total Volunteer Hours = 4,124
- Monetary Value = \$75,882

(based on State of Florida 2009 dollar value for volunteer time of \$18.40/hr x 4,124 hours)

**“Volunteers do not get paid... not because they are worthless, but because they are priceless.”**



Neighborhood Services would like to thank our current sponsors:

